

BPF-015

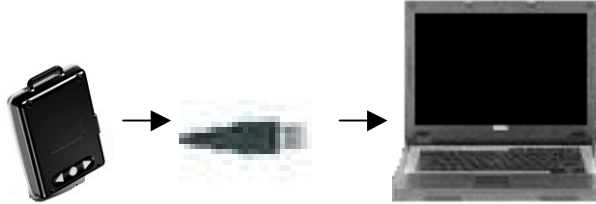
User Manual



3100554091
Version 1.0
Oct. 2007

Installation Steps

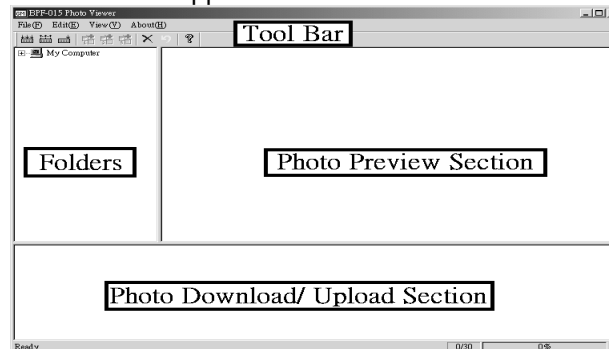
1. Please insert the CD into the CD-ROM drive of your computer.
2. Please connect your Key Chain Photo Frame to your PC or laptop via attached USB adapter.



Attention:

1. When you connect your Key Chain Photo Frame to the PC or laptop, you are charging your Key Chain Photo Frame at the same time. Please charge your Key Chain Photo Frame for 4 hours before the first time usage.
2. When you connect your Key Chain Photo Frame to the PC or laptop, the Key Chain Photo Frame will turn on automatically.

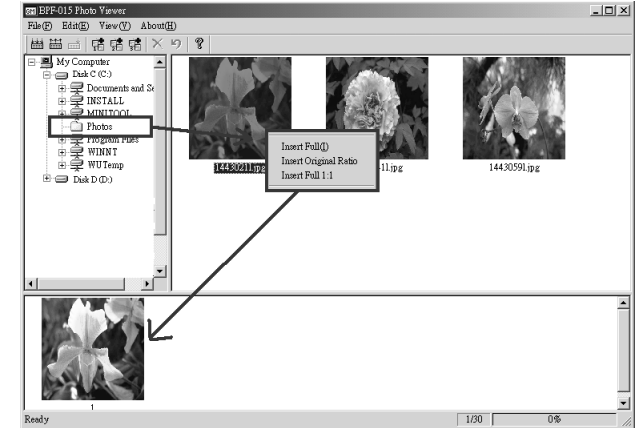
3. When you connect the Key Chain Photo Frame in the first time, Windows will pop up a wizard to install driver for new hardware, please follow the on-screen instructions and select "X:\\BPF-015 1.5" Square\\driver\\GM3615.inf" (X:\\ stands for CD-ROM) as the driver. When the driver installation is done, please click "Setup.exe" in BPF-015 1.5" Square folder to install the Photo Viewer application and follow the on-screen instructions to finish the installation. Once you finish the installation, please click "Start" → "Programs" → "BPF-015 Photo Viewer" and the Photo Viewer application will run.



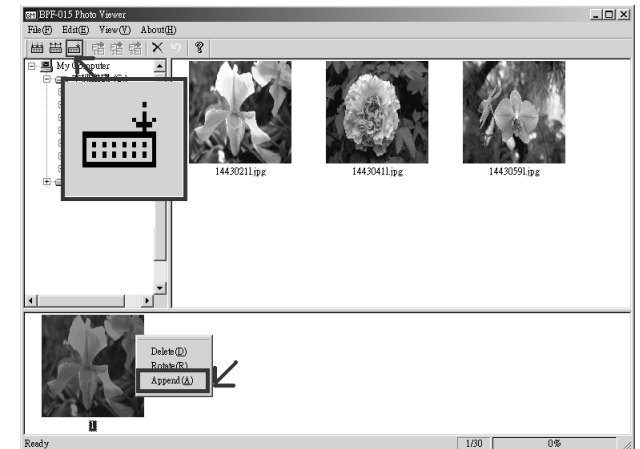
Please follow the following instructions to download or upload photos into or from your Key Chain Photo Frame.

(1) Add photos:

You may add a single photo or multiple ones into your Key Chain Photo Frame. Please select photos in your PC or laptop's respective folder and right click the selected photo to select "Insert Full", "Insert Original Ratio", or "Insert Full 1:1" and the photo selected will be drag to the "Photo Download / Upload Section".

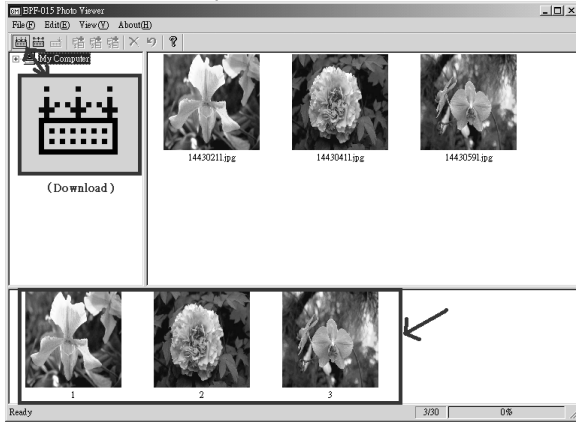


Once the photo is dragged to "Photo Download/Upload Section", you may right click to delete, rotate, or append and click "Append" icon on the tool bar to add photo into your Key Chain Photo Frame.



(2) Download all:

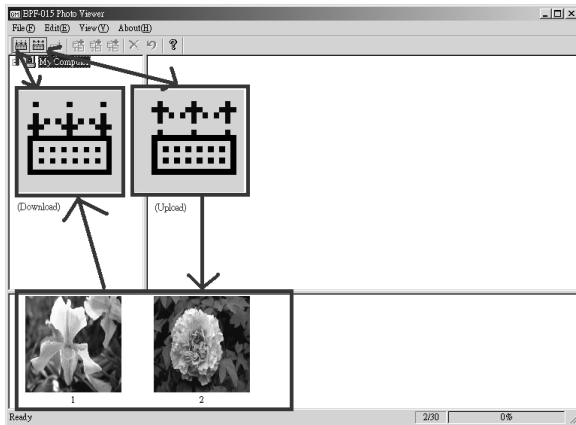
You may download all photos in “Photo Download/ Upload Section.” After selecting photos, you may click “Download” icon on the tool bar to download all photos in Photo Download/ Upload section.



*Please note that when you click “Download,” you will delete all original photos in Key Chain Photo Frame and replace them by photos in Photo Download/ Upload Section.

(3) Delete one:

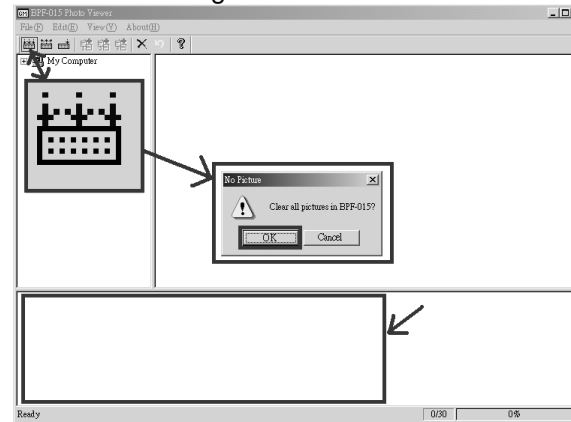
You may delete one photo or multiple photos by clicking “Upload” icon on the tool bar to upload photos in your Key Chain Photo Frame to Photo Download/ Upload Section. After uploading, you can delete the photos by right clicking the photo and clicking “Delete.” After deleting, please click “Download all” icon to download the ones remained.



(4) Delete all:

You may delete all photos in your Key Chain Photo

Frame by leaving Photo Download/ Upload Section blank and clicking “Download” icon.



2. After downloading photos to your Key Chain Photo Frame, you may now disconnect your photo frame from your PC or laptop and start to enjoy your Key Chain Photo Frame with sweet portable memories.

Getting Started

Please follow the following instructions to operate your Key Chain Photo Frame.

- **Power on:** Please press “Menu” button in the back of Key Chain Photo Frame until LCD lights up.



- **Selections:** Please press “Up” or “Down” in the back of Key Chain Photo Frame to select the photos you would like to view.



- **OSD Settings:** Please press “Menu” button in the back of Key Chain Photo Frame during photo viewing and the following OSD setting interface will pop up. You may now press “Up” or “Down” button to tune the settings for your preference.

***Power Saving:** Set up the time for auto power off in 1, 3, 5, 10, 15, 20, 25, 30, 60 minutes, or OFF.

***Auto Play:** Set up the time for auto slideshow in 3, 5, 10, 15, 20, 25, 30, 60 seconds, or OFF.

***Show Index:** Show the index of the photo or not.

***Save & Exit:** Save your personal settings and exit the OSD interface to back to the photos.

- **Power off:** Please press “Menu” button for 5 seconds until LCD lights off and the Key Chain Photo Frame will be turned off.



Attention: When you are unable to turn the Key Chain Photo frame on, you are running out of the battery. Please charge your Key Chain Photo Frame by connecting it to PC or laptop for 3-4 hours.

DISCLAIMER

Whilst every effort has been made to ensure that the information in this manual is accurate and complete, no liability will be accepted for any errors and/or omissions made. The manufacturer reserves the right to make changes and improvements to the specifications and features of the hardware of the products described in this document without prior notice. Reproduction, transfer, distribution or storage of part or all of the contents in this document in any form is prohibited without prior permission of the manufacturer. All trademarks acknowledged.